

FOSTON PRIMARY SCHOOL BULLETIN

A Christmas Message from the Executive Headteacher

As we come to the end of a busy and rewarding autumn term, I would like to take this opportunity to thank everyone in our school community for their continued support.



Over the past few weeks, it has been wonderful to see our schools filled with the spirit of Christmas through our wonderful nativity performances, Christingle services and celebrations. These special events have given our children the opportunity to reflect on the Christmas story, to sing, perform and celebrate together and to share this with family and friends.

I would like to recognise the hard work, commitment and dedication of our staff, who go above and beyond every day to provide a rich, caring and supportive learning environment for our children. I am also incredibly proud of our children, who have worked so hard throughout the term and have shown enthusiasm, kindness and resilience in all that they do.

Thank you to our parents and carers for your ongoing support, encouragement and partnership with our schools. Your involvement makes a real difference to our school communities and is greatly appreciated.

As we approach the Christmas break, I hope you are able to enjoy the festivities together with family and friends. On behalf of the governors and staff, I would like to wish you all a very happy Christmas and a peaceful New Year. We look forward to welcoming everyone back in the new term.

With warmest wishes,

Sarah Moore

Executive Headteacher

Message from the Head of School

As we come to the end of this term, I would like to take a moment to thank you for your continued support.

Thank you to all who were able to attend our Carol Service and Nativity last week. It was a lovely occasion, and the children did an excellent job — their confidence, singing and musical talents were a pleasure to see, and it was wonderful to share the event with you. We also had our Celebration Assembly this week, it was a special opportunity to recognise the children's hard work, effort and achievements this term, and your presence helped make it a meaningful and memorable event for them.

Our House Point results for this half term are:

Lewis Carroll– 163

Atinuke– 161

Dr Seuss– 127

Beatrix Potter– 89

Congratulations to **Lewis Carroll**, our winning house! Pupils in Boyes can look forward to a non-uniform day and special treat on **Friday 9th January**, to celebrate their success.

Kind regards

Miss Stringer

Head of School



FOSTON PRIMARY SCHOOL BULLETIN

Class 1 & 2

What a fabulous festive day we had on Wednesday! It all started with a trip through a tunnel of presents into a magical gingerbread grotto. When we arrived we had a lovely story from a very special visitor then sang a festive song together before receiving a gift for Christmas day. Thank you so much to PAFFs for persuading Santa to take time out of his busy schedule to come and see us! In the afternoon we all went to the village hall for our Christmas party. Don't be fooled by the picture, there was lots of energy in the room as we played pin the nose on Rudolph; Elf, Elf, Santa and finally sleeping reindeers. The whole KS1 team would like to thank you for your support over the term and wish you and your families a peaceful festive season.



Class 3

It has been another busy week in school with lots of exciting events. The children had a lovely surprise visit from Santa. They also had fun at their Christmas party; it was lovely to see all the Christmas accessories and jumpers. We have finished the week off with a visit from a science bus! We explored different forces and with lots of different experiments.



Class 4

The children in Class 4 have made lovely angels this week that will be on The Holy Trail where you can see them on display in some of the churches on the trail. Hope you all have a lovely Christmas!



FOSTON PRIMARY SCHOOL BULLETIN

School Lunches

We are pleased to share that a new and exciting school lunch menu will be launching in January. We have gathered feedback from the children about their favourite school meals and are also excited to trial paninis as part of the new offer.



The menu will now operate on a two-week cycle, with the aim of keeping meal costs at the current price while including popular choices and ensuring a balanced, nutritious diet. We have worked closely with the County Catering team to develop a menu that meets the needs of our school, and we are pleased to have seen an improvement in portion sizes for our older children.

In addition, we have made a change to our lunchtime routine so that children having school dinners and those bringing packed lunches can eat together. This means all children can enjoy lunchtime with their friends, regardless of their lunch choice.

We hope these changes will be warmly welcomed by both children and parents.

Managing The Christmas Sensory Overload. (Please see the attached info)

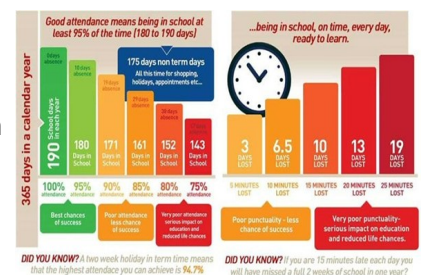
It's that time of year which for some of us is exciting: meeting and catching up with friends and family, putting up glittery decorations and sparkly lights, giving and receiving shiny gifts, parties, dressing up, singing songs, and watching TV specials. Yet for many children, young people and adults, this time of year can be filled with emotional and sensory overwhelm. An increase in noise, multiple voices, crowds, social expectations, changes in routine, flashing lights, different textures brought into the house, loud and busy music and surprise gifts. Attached is a handy guide and advice from Beacon House to ensure a more joyful, or tolerable time for all the family as well as some contact information below for support with emotional and mental health.

School Uniforms

As we send home PE kits and clothes after the EYFS/KS1 nativity please can parents check if they have mistakenly received any extra pieces of uniform. Equally, if you have any pieces of missing uniform we have a very full lost property box which you are welcome to look through.

Attendance and Lateness

We have noticed an increase in children arriving late to school in a morning. Please note that the school gates/doors are open from 8:45am until 9am and we kindly ask that children are dropped off in this time. The gates/doors will be closed at 9am, please be aware children arriving late after the register has closed will be marked as unauthorised for the morning. Arriving late for some children can be stressful and often means they have missed instructions for the morning activity. Please note we have breakfast clubs at our schools starting from 8am, should you wish to enquire about these, please speak to our school office staff.



Our Whole School Attendance is

97.3%

As a school we aim for 95% attendance from all our pupils. We realise this is not always possible when your child is poorly. We are sure you will agree we all want our children to succeed, and good attendance is proven to give children the maximum learning time possible. Your child's attendance can now be monitored via the Arbor App.



FOSTON PRIMARY SCHOOL BULLETIN

Year 5 & 6

Our Year 5/6 children had an extra treat this week with a visit from Harton Benefice's Youth and Families Worker – Rachael. Rachael spent most of Monday morning with the children making some very beautiful angels as part of their Angel Trail (shared in last weeks bulletin). All the children's angels have been placed in one of the following churches, Flaxton, Foston, Whitwell.



There are post boxes and answer sheets in each church. The Angel Trail runs from 20th December - Twelfth Night. A winner will be pulled at random from a hat and announced at the next All Age Worship in Bossall on January 25th. If winners are not there, as long as contact details have been left on the answer sheets, they will contact the winner.

There are some wonderful Christmas events happening over the next week or so, please see below

- Whitwell Church - Mince Pies Christmas - Saturday 20th
- Christmas at Crambe - Saturday 20th 6pm Candlelight Carols, Readings Concert.
- Gate Helmsley Church - Sunday 21st 10am Christmas Service & Holy Communion
- Foston Church 24th December 4pm - Crib Christingle , children may dress in Christmas outfits or Nativity Characters and take part in Crib song
- Bossall St Botolphs - Christmas Eve Midnight Mass 11pm

Benefice website <http://www.sandhuttongroup.org> @HartonYouthPlayers on Instagram

Parents' Meeting – Residential Trip

There will be a parents' meeting regarding the residential trip on **Thursday, January 8th at 4:00 PM**. The meeting will take place with organisers from Beverley Park, who will be at Stillington and joining our schools via Microsoft Teams. A room will be set up in each school for parents to join via Microsoft Teams. The organisers will provide information about what the residential will look like for your child and will be available to answer any questions. If you are unable to attend in person, parents can also attend remotely via the link:

Microsoft Teams

[Join the meeting now](#)

Meeting ID: 327 064 964 969 48

Passcode: 23Pk287p

If you are unable to attend, please let your child's class teacher know. These can be passed on to Mr Carlisle and Mr Yip, who are organising the residential this year.

Mr Neil Carlisle

KS2 teacher (Stillington)



FOSTON PRIMARY SCHOOL BULLETIN

Fun with PAFFS

Mrs Moore and Miss Cooke were out supporting the PAFFS with the Painting of a Cow event. They thoroughly enjoyed the evening and who knew they are that talented !!



After School Clubs Spring 1

Please can all children be pre booked into all clubs on Arbor.

	Monday	Tuesday	Wednesday	Thursday	Friday
Club	Colouring Club	Total Sports	Musical Theatre	Choir	Finger Knitting
Leading Adult	Mrs Read	Mr Cass	Mrs Read	Mrs Read	Mrs Read
Time	3.30-4.30pm	3.30-4.30pm	3.30-4.30pm	3.30-4.30pm	3.30-4.30pm
Age	Key Stage 1 (Y1-Y2)	Rec-Y6	KS1 & KS2 (Y1-6)	KS1 & KS2 (Y1-6)	KS1 & KS2 (Y1-6)

Mondays - colouring club KS1 - each week we will have a different theme and use different resources (pencils, paints, felt tips ect) then at the end have a discussion how this week's resource was different to last week.

Tuesdays - Sports club for reception, KS1 and KS2 led by Mr Cass. This will include a range of winter sports and skills.

Wednesday - musical theatre KS1 & KS2 - this term we will be moving on from just singing and dancing and involve acting including facial expressions and hand gestures. This one will run over 2 half terms and hopefully be the end of the Spring term we will have a small show to put on instead of just 1 song.

Thursday - Choir KS1 & KS2 - This will hopefully be a constant club that will always be run. We will be learning about the different jobs within a choir and how to pronounce the words in a way that is clear for the audience.

Friday - Finger knitting KS1 & KS2 - starting off simple we will learn how to finger knit and which technique works best for each person, then moving onto some simple designs.

Here is a picture from this terms KS1 Musical Theatre Group.



FOSTON PRIMARY SCHOOL BULLETIN

Diary Dates

Event	Date	Key Points
Christmas	Last day at School 19th December 2025.	First day back Tuesday 6th January 2026
Residential Workshop Beverley Park.	Thursday 8th January 2026	<ul style="list-style-type: none"> • KS2 Parents workshop • 4.00pm in a classroom in school.
Stay and Play	Mondays 12th January onwards	<ul style="list-style-type: none"> • Every Monday in term time 1-30pm-3.00pm • For children aged between 2-4 years.
Reception Deadline for Sept 2026	Thursday 15th January 2026	
Dodgeball KS1 Malton Sports Centre	Wednesday 4th March 2026	<ul style="list-style-type: none"> • Consents required please check Arbor. • PE Kits and named water bottle.
Spring Half Term	Last day at school Friday 13th February 2026 First day back Monday 23rd February 2026	
Easter	Last day at school Friday 27th March 2026 First day back Tuesday 14th April 2026	

Helpful information

What should I do if I am worried about a child?

How to report your safety concerns

If you believe that a child is in immediate danger from significant harm, dial 999 to report it to the Police.

How do I make a referral?

Referrals can be made via the universal referral form or following an Early Help Assessment. Both can be located on North Yorkshire Safeguarding

Children Partnership website:

<https://www.safeguardingchildren.co.uk/professionals/forms-and-tools/>

Urgent referrals can be made via telephone to the Customer Resolution Centre on 0300 131 2 131.

or alternatively call the NSPCC Helpline: 0808 800 5000 or email: help@NSPCC.org.uk

Foston C.E. Primary School YO60 7QB Tel 01653 618265

Email : fostonoffice@foston.n-yorks.sch.uk

Executive Head : Mrs S Moore

Headteacher : Miss K Stringer

