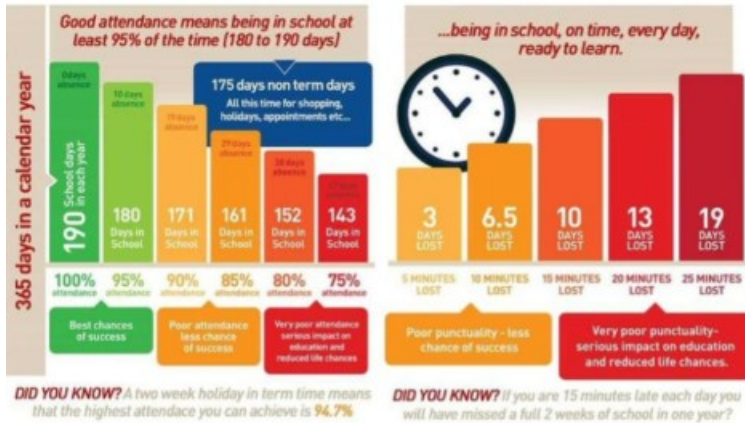


# FOSTON PRIMARY SCHOOL BULLETIN

## Attendance

As a school we aim for 95% attendance from all our pupils. We realise this is not always possible when your child is poorly. We are sure you will agree we all want our children to succeed and good attendance is proven to give children the maximum learning time possible. Your child's attendance can now be monitored via the Arbor App.



**Our whole School  
Attendance is  
97.29%**

## Winning House

We are pleased to share that our winning house this half term is Atinuke with 135 points. There will be a non-uniform day on Friday 17th April for this house. Well done!

1. Atinuke- 135
2. Lewis Carroll-128
3. Beatrix Potter-109
4. Dr Seuss -98

## KS2 York Castle Museum Trip

As part of our history curriculum, the KS2 children will be visiting York Castle Museum.

- **Y3/4:** 24th April
- **Y5/6:** 28th April

On both days, the bus will depart from school at **9:15am**. Please ensure your child arrives at school by **9:00am** to support a prompt departure. We will return to school before the end of the normal school day.

Children will need a packed lunch and a water bottle. If you would like to order a school packed lunch, please email the school office with your choice of ham, cheese or tuna sandwiches before **Wednesday 15th April**.

Please send your child to school in full school uniform and with a waterproof coat, as we will be walking to and from the bus.

To help cover the cost of the bus, we would appreciate a voluntary contribution of £5.50 per child, which can be paid via Arbor.

Thank you for your continued support.

# FOSTON PRIMARY SCHOOL BULLETIN

## Clubs for Summer 1

	Monday	Tuesday	Wednesday	Thursday	Friday
Club	Musical Theatre	Total Sports	Musical Theatre	Gardening	Different Each Week !
Leading Adult	Mrs Read	Mr Cass	Mrs Read	Miss Dale	Mrs Read
Time	3.30-4.30pm	3.30-4.30pm	3.30-4.30pm	3.30-4.30pm	3.30-4.30pm
Age	EYFS & KS1 (R-Y2)	All Years	KS2 (Y3-Y6)	All Years	All Years

## Club Price Update

As mentioned in a previous bulletin, unfortunately due to rising costs the Governors have agreed to increase the price of school clubs from **14th April 2026**. The new costs are listed below:

Breakfast Club	8.00-8.45am	£4	
Afterschool Club	3.30-4.30	£6	
	3.30-5.30	£10	
	3.30-6.00	£12	Advance booking required by the end of the previous half term.

## PE KITS

For health and safety reasons, it is essential that children are dressed appropriately for any physical activity. The kit should be kept in school and taken home at weekends and the end of term to be washed.

- ✓ White t-shirt
- ✓ Black/Navy shorts / jogging bottoms
- ✓ Trainers
- ✓ Black/Navy jumper/hoodie

Recently we have had some children not bringing PE kits regularly into school, please can we ensure these are available for the first week back.

# FOSTON PRIMARY SCHOOL BULLETIN

## **PSHE - Keeping ourselves safe.**

This half term, our PSHE learning focuses on keeping safe both online and in everyday life.

In Years 1 and 2, children are learning how age restrictions help keep them safe and the basics of online safety, including not sharing personal information and telling a trusted adult if something makes them feel worried or uncomfortable. We will also be revisiting the clever never goes rule with the children as a way of keeping safe.

In Years 3 and 4, children are learning what drugs are in an age-appropriate way, including that some are medicines that help us when used correctly. We are also exploring safe use, the risks of misuse, and the importance of speaking to a trusted adult if they are concerned.

In Years 5 and 6, children are developing their understanding of online safety by learning how to protect personal information. They are also learning about the risks and effects of drugs, the laws around them, and where to access support, including organisations such as Childline.

Across all year groups, we continue to emphasise the importance of talking to a trusted adult and asking for help when needed.

## **Malton Sports Centre KS2 event**

On Wednesday 15th April, the children in KS2 (Years 3, 4, 5, and 6) will be taking part in a Basketball, Handball, Netball event at Malton Sports Centre. The children are asked to come into school in their uniform and will get changed at school into their school PE kits, trainers to be worn. Children will also need to be wearing their school jumpers. They will have lunch at school as normal.

A member of staff will accompany the children on a bus, which will take them to Malton in the afternoon. The children should arrive back in time for the end of the school day.

# FOSTON PRIMARY SCHOOL BULLETIN

## **Class 1**

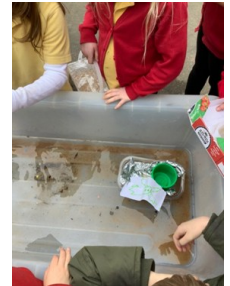
What a busy week it has been! We started with Maths Day and enjoyed a range of activities including dice games, pattern making and searching for shapes outside.

We also had a lovely time finding out why Easter is important to Christians and how they celebrate this special event. After discussing the symbol of the cross on the buns we were excited to sample some hot cross buns. In Germany, people decorate eggs and hang them on trees, so we decorated some eggs to hang at home. We would like to take this opportunity to wish everyone a very Happy Easter.



## **Class 2**

The children have had a busy week starting off with maths day on Monday becoming maths detectives and exploring maths outside. The children then planned, created and tested a boat to see if it could float and was waterproof. There was great discussion about the properties and materials needed. Mrs Caddy and Mrs Richmond are also very proud of Class 2 with their work on the Easter Service, well done!



## **Class 3**

In Class 3 this week, we have been writing our rescue narratives. We have put lots of effort into using descriptive language and fronted adverbials, and it has been lovely to see these stories come to life. On Tuesday, we finished our collages the artwork was amazing!

A huge well done to all the KS2 children. After all their hard work learning parts and practising songs, it was fantastic to see the performance they put on. Their artwork brought the story to life, and the singing was incredible.

We hope you all enjoy the Easter holidays!

## **Class 4**

Class 3 have been writing diaries as Salim, the character who goes missing in our book The London Eye Mystery. We had fun coming up with creative ideas about his reasons for disappearing and used our skills of diary writing such as first-person informal language, emotive language, time connectives and paragraph structure.

We hope you all have a wonderful Easter holiday.

# FOSTON PRIMARY SCHOOL BULLETIN

## Diary Dates

Event	Date	Key Points
Stay and Play	Mondays 12th January onwards	<ul style="list-style-type: none"> <li>• Every Monday in term time 1-30pm-3.00pm</li> <li>• For children aged between 2-4 years.</li> </ul>
Easter 	Last day at school Friday 27th March 2026 First day back <b>Tuesday 14th April 2026</b>	
Basketball, Handball, Netball KS2 Malton Sports Centre	Wednesday 15th April	<ul style="list-style-type: none"> <li>• PE Kits</li> <li>• Water Bottle</li> </ul>
York Castle Museum Years 3&4 (Miss Lakin)	Friday 24th April	<ul style="list-style-type: none"> <li>• School Uniform, Waterproof Coat</li> <li>• Water Bottle</li> <li>• Packed Lunch</li> <li>• Arrive at School for 8.45am</li> </ul>
York Castle Museum Years 5&6 (Mr Yip)	Tuesday 28th April	<ul style="list-style-type: none"> <li>• School Uniform, Waterproof Coat</li> <li>• Water Bottle</li> <li>• Packed Lunch</li> <li>• Arrive at School for 8.45am</li> </ul>
Quick Rounders & Cross Country KS2 Malton Sports Centre	Wednesday 29th April	<ul style="list-style-type: none"> <li>• PE Kits</li> <li>• Water Bottle</li> </ul>
May Bank Holiday	Last day of school Friday 1st May 2026 <b>First day back Tuesday 5th May 2026</b>	•
May Half Term	Last day of school Friday 22nd May 2026 <b>First day back Monday 1st June 2026</b>	•
Bewerly Park KS2	Monday 1st June— Wednesday 3rd June	• Payments to be made before 15th May.

## Helpful information

### What should I do if I am worried about a child?

#### How to report your safety concerns

If you believe that a child is in immediate danger from significant harm, dial 999 to report it to the Police.

#### How do I make a referral?

Referrals can be made via the universal referral form or following an Early Help Assessment. Both can be located on North Yorkshire Safeguarding Children Partnership website:

<https://www.safeguardingchildren.co.uk/professionals/forms-and-tools/>

Urgent referrals can be made via telephone to the Customer Resolution Centre on 0300 131 2 131.

or alternatively call the NSPCC Helpline: 0808 800 5000 or email: [help@NSPCC.org.uk](mailto:help@NSPCC.org.uk)

Foston C.E. Primary School YO60 7QB Tel 01653 618265 Email : [fostonoffice@foston.n-yorks.sch.uk](mailto:fostonoffice@foston.n-yorks.sch.uk)

Executive Head : Mrs S Moore Headteacher : Miss K Stringer

